

**PROJECTS**

# MASTER PLANNING



**ARCHICONIC**  
KUALA LUMPUR

Archiconic's aim is  
to be the embodiment  
of iconic architecture.

## RESPONSIVE

Grounded by the firm belief in humane architecture, every piece of work responds to the environment and context.

## EFFECTIVE

Every creation is beyond just the cosmetic.

## ASSURANCE

Every projects is implemented with equal passion from start to end.

**PROJECTS:**

RESIDENTIAL

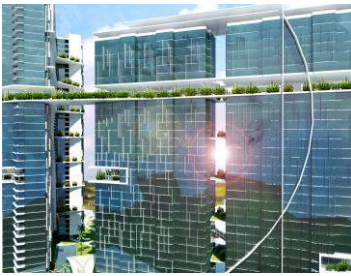
COMMERCIAL & INDUSTRIAL

INSTITUTIONAL & RECREATIONAL

**MASTER PLANNING**

Archiconic Sdn Bhd is a design consultancy,  
associated with Kuek Wee Chien Architect, a registered  
professional architectural consultancy practice under Lembaga  
Arkitek Malaysia [LAM]

**LOT PT 12**  
Shah Alam



A mixed commercial development in a 22 acres land next to Federal Highway.  
3 & 5-storey shop offices connected to a neighbourhood mall next to a riverside boulevard.  
3 blocks of services apartment sit above this retail podium with a continuous sky deck connecting these blocks at higher level.

**LOCATION:**  
Section 15, Shah Alam

**CLIENTELE:**  
Magna Prima Berhad

**BUILDER**  
-

**VALUE:**  
-

**PROJECTS:**

RESIDENTIAL

COMMERCIAL & INDUSTRIAL

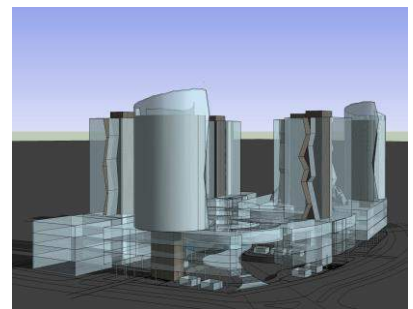
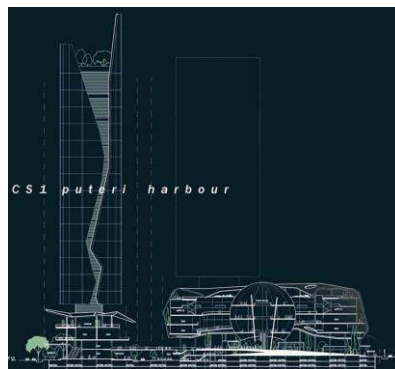
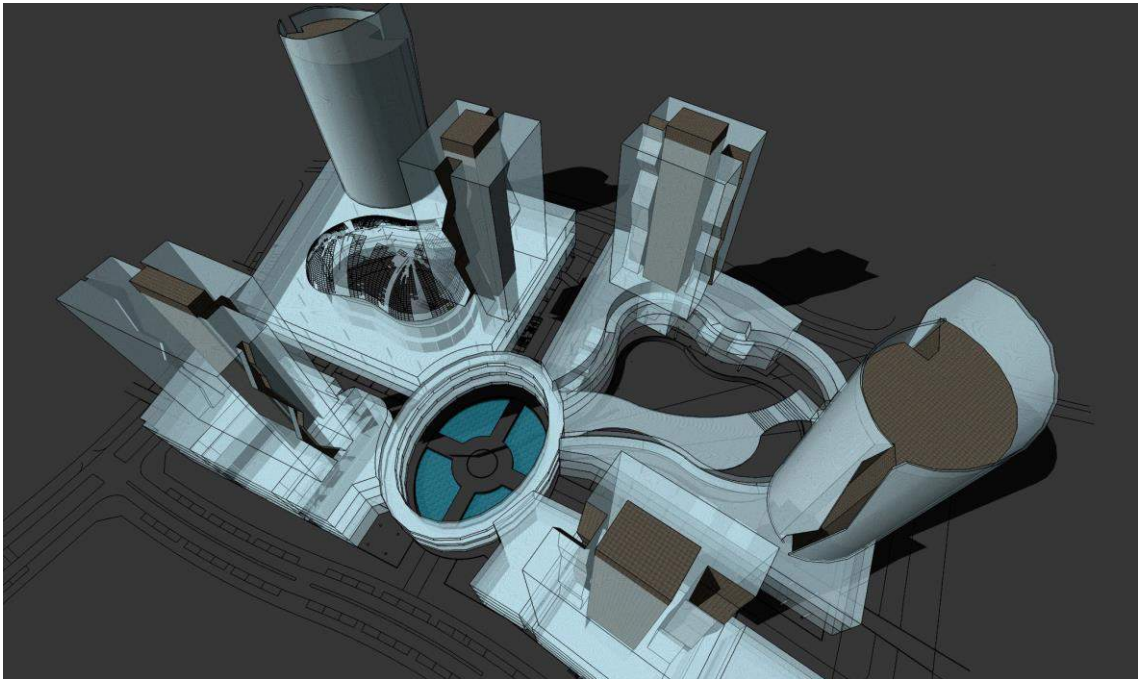
INSTITUTIONAL & RECREATIONAL

**MASTER PLANNING**

Archiconic Sdn Bhd is a design consultancy,  
associated with **Kuek Wee Chien Architect**, a registered  
professional architectural consultancy practice under Lembaga  
Arkitek Malaysia [LAM]

## PUTERI HARBOUR

Bandar Iskandar, Johor Bahru



**LOCATION:**

Bandar Iskandar, Johor Bahru

**CLIENTELE:**

Damac LLC  
(in association with Garis Architects Sdn Bhd)

The brief was to design one of the commercial parcel of Puteri Harbour.

**VALUE:**

-

**PROJECTS:**

RESIDENTIAL

COMMERCIAL & INDUSTRIAL

INSTITUTIONAL & RECREATIONAL

**MASTER PLANNING**

Archiconic Sdn Bhd is a design consultancy,  
associated with **Kuek Wee Chien Architect**, a registered  
professional architectural consultancy practice under Lembaga  
Arkitek Malaysia [LAM]

**YANTAI**  
China



This is a development scheme to joint venture with the local authority. The objective was to revitalise a village into a tourist and retreat centre.



**LOCATION:**  
Yantai, China

**CLIENTELE:**  
Sialin Holding Sdn Bhd

**VALUE:**  
-

**Archiconic Sdn Bhd (824843-T)**

Unit C-1-3, Blk C, Kuchai Exchange  
No. 43 Jalan Kuchai Maju 13  
Kuchai Entrepreneurs Park  
58200 Kuala Lumpur  
Wilayah Persekutuan  
Malaysia

T : +603-7983 4208  
+603-7983 5208

F : +603-7983 3208

E : [archi@archiconic.com](mailto:archi@archiconic.com)

W : [www.archiconic.com](http://www.archiconic.com)